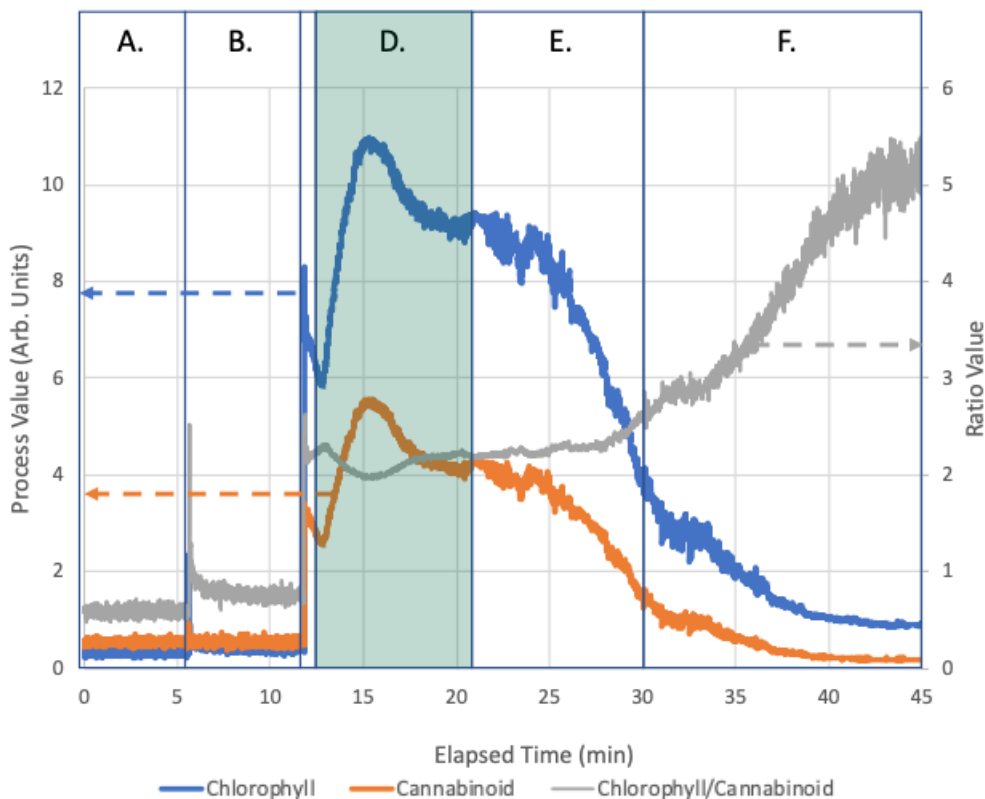




EXTRACTION FINDER

ETHANOL EXTRACTION RUN DATA

C.



A. Filling Extractor with Ethanol (Flow Off)

- No flow over sensor; no signal

B. Agitating Extractor Then Soak Cycle (Flow Off)

- No flow over sensor; initial signal noise due to mechanical vibrations

C. Flow Started/Equilibrating Flow

- Full flow over sensor; signal spikes then drops after initial fluid flow

D. Recirculating Ethanol

- Full flow over sensor; signal increases/decreases as Cannabinoid concentration equilibrates and becomes homogeneous in ethanol
- *End point (solvent saturation) determined by the Cannabinoid and Chlorophyll signals - and their ratio - becoming stable*

E. Emptying System Using N₂ Gas

- Extractor being emptied with nitrogen gas and system no longer chilled; both Cannabinoids and Chlorophyll signals decrease

F. Emptying Residual Alcohol from Extractor Reservoir

- Decrease in both Cannabinoid and Chlorophyll signals; increase in ratio of Chlorophyll to Cannabinoid from system heating (ethanol preferentially extracting Chlorophyll in reservoir)