

Quick Start Guide

EXTRACTION
FINDER



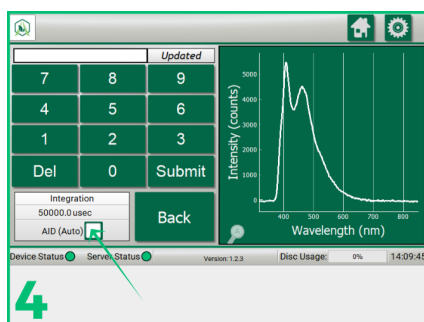
Attach sight glass to extractor's sanitary flange connections



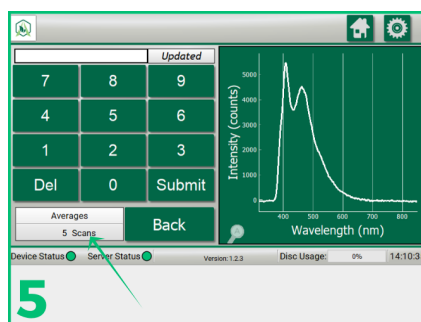
Install the compute module using the power supply



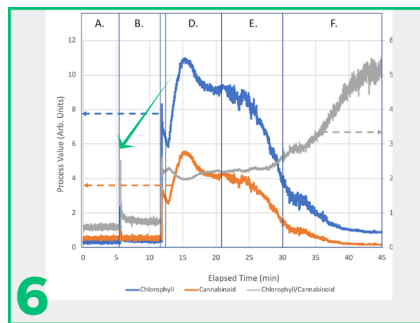
Connect and power the system, then prepare extraction as you typically would



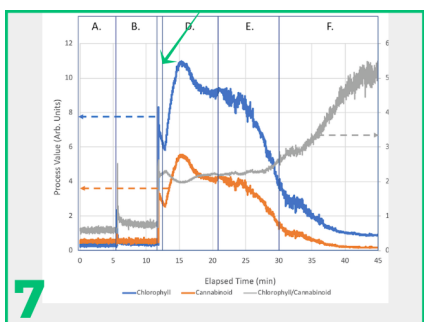
Set integration to AID (Auto)



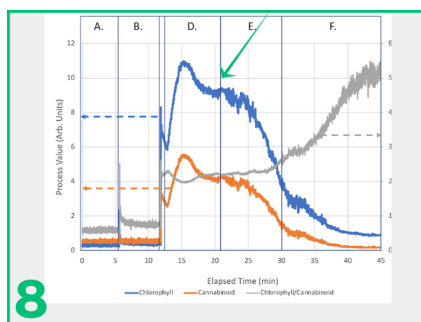
Set scans to average to 5



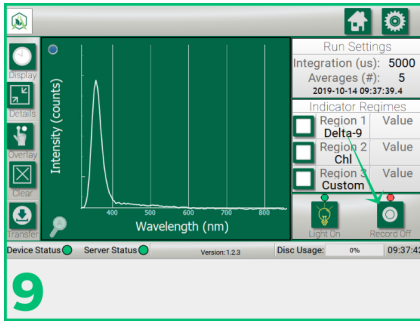
Observe no signal or noisy signal from reverberations during initial startup



Identify signal spiking then dropping after initial fluid flow



Identify signal equilibrium during full flow; identify **end point** by Cannabinoid and Chlorophyll signals stabilizing



If you chose to record your run, press turn off recording